



Donate
Now!

Dear friends,

I'm excited to share that we have started site demolition and we are officially breaking ground on the Hub House phase of the Island Autism Center! As you may recall, this phase includes the construction of the Hub House and the farm building, where the day programming, commercial kitchen, and farm manager housing will be located. The building will significantly increase our program capacity and offerings during both afterschool and summer hours, and will also enable IAG to have the space and safe setting to bring professionals from off-Island to meet with families for planning, counseling, and other helpful life training programs. As such, we will not need to hire in-house staff but instead

will collaborate with off-Island groups to bring the expertise here - instead of having all families have to travel to them.

This is such a critical project and vital resource for so many on Martha's Vineyard. We have identified approximately 200 year-round residents, including 56 school-aged children diagnosed on the autism spectrum, undiagnosed adults, and family members impacted by autism, all of whom could benefit from the Island Autism Center. Additionally, it will have implications for people all over Massachusetts as a model for an emerging way to provide programming and residential options for everyone with autism and autism-related disorders.

The Hub House and farm building are very important for the overall project. Unfortunately, these structures do not qualify for funding in the same way the housing will in phase two. Therefore we must raise all the money with private donations. Thanks to our generous supporters, we already have more than \$1 million raised for the Hub House, but we need to raise another \$2 million to complete this phase.

We can't do this without **your** help!

To make this incredibly important project possible, we are hoping to receive commitments of \$100,000 from ten donors and 50,000 from twenty donors. If you can help us reach this goal or if you can make a gift at a different level, please [help us here](#). I am available to tour the property with you if you are here over the holidays. You really need to see it to believe it, so I hope you'll schedule a visit!

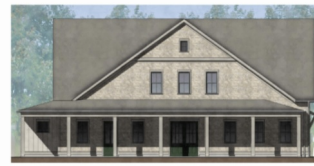
We are so grateful to you, our community, for all the support you have given us so far. We are so close to something truly wonderful! Please help us take it over the finish line.

Happy Happy Holidays!

Kate

We are breaking ground on the farm hub house! Along with the barn raising coming in the spring, this will complete the day

programming part of the build and the farm will be ready for animals and people!



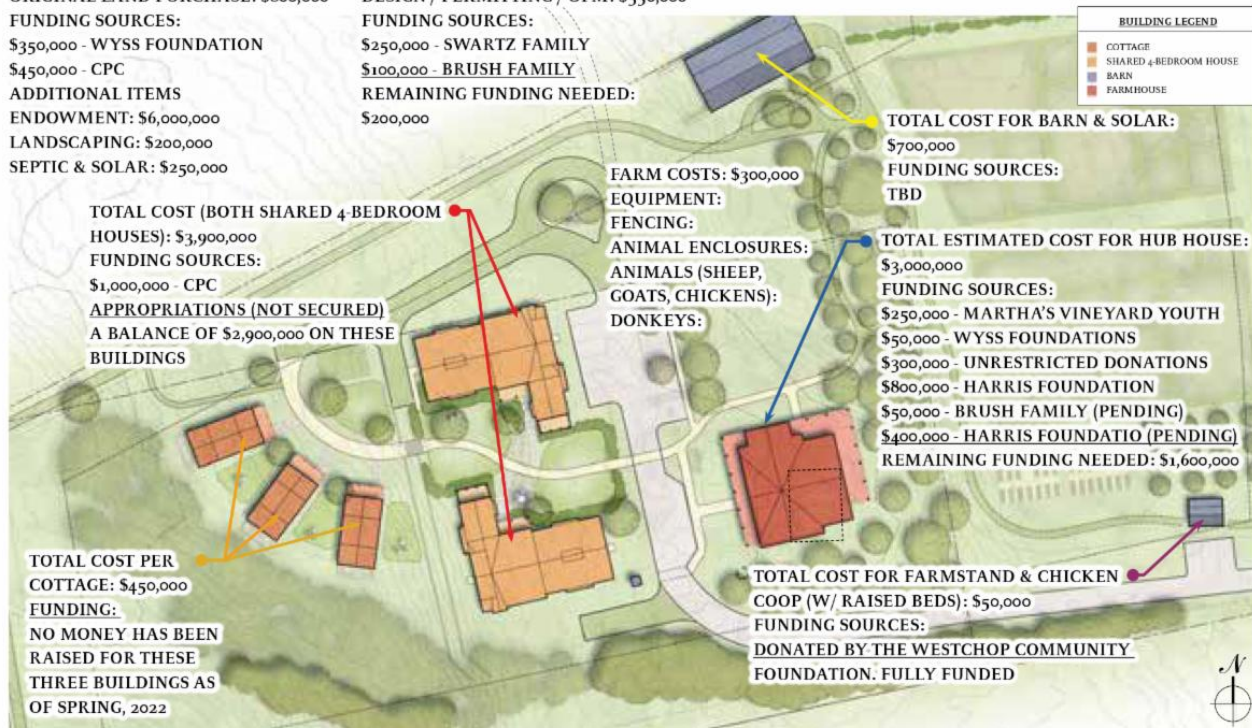
- "THE HUB HOUSE"**
Day programs and staff apartment
- Entry lobby, offices, storage, mechanical and bathrooms
 - Teaching kitchen, mudroom, half bath and stairway
 - Community gathering room / common space that opens onto a wrap around porch facing the gardens & agricultural space.
 - Second floor Tenant farmer apartment
 - Two one bedroom apartments for visiting parents, staff / flexible use
 - Common living room and laundry



Island Autism Center Funding Sources and Gift Opportunities

ORIGINAL LAND PURCHASE: \$800,000
 FUNDING SOURCES:
 \$350,000 - WYSS FOUNDATION
 \$450,000 - CPC
 ADDITIONAL ITEMS
 ENDOWMENT: \$6,000,000
 LANDSCAPING: \$200,000
 SEPTIC & SOLAR: \$250,000

DESIGN / PERMITTING / OPM: \$550,000
 FUNDING SOURCES:
 \$250,000 - SWARTZ FAMILY
 \$100,000 - BRUSH FAMILY
 REMAINING FUNDING NEEDED:
 \$200,000



ISLAND AUTISM CENTER AT CHILD FARM

SITE PLAN
 AUGUST 8, 2022
 SCALE: 1"=40'-0"

TOTAL FUNDED: \$3,600,000
 TOTAL PENDING: \$1,450,000
 TOTAL REMAINING TO BE FULLY FUNDED: \$6,200,000
 ENDOWMENT TO BE FUNDED: \$6,000,000



UNION STUDIO
 ARCHITECTURE & COMMUNITY DESIGN



Holiday Lights decorate the Chicken Coop



Holiday Lights decorate the Farm Stand



We are working hard to raise the funds for the remainder of the build and our endowment fund. Please contact us with questions about giving or go to our [donation page](#) on line.

Any support you can offer in helping us reach our goals will be greatly appreciated. We are eager for the day when you can come see us in full operation and get to see the lives that you have impacted with your caring and generosity.

Please view our [master plan fly-through](#).

Happy Holidays from the Island Autism Center!

With gratitude,
Kate DeVane



Moby (badword)

Buy
Now!

Happy Holidays from all of us at Island Autism Group!



Master Plan Fly-Through

How you can help



Island Autism Group | 508-693-2568 | P.O. Box 2786 Edgartown, MA 02539 | islandautism.org

